

\$585,000 - 903 Abbotsford Drive Ne, Calgary

MLS® #A2200223

\$585,000

5 Bedroom, 2.00 Bathroom, 1,154 sqft
Residential on 0.14 Acres

Abbeydale, Calgary, Alberta

Incredible value in the heart of Abbeydale!
This corner lot home is bursting with potential, offering 2000 sq ft of developed living space, 5 bedrooms, and 2 full bathrooms – the perfect canvas to create your dream home or a savvy investment opportunity. Sitting on a huge lot with RV parking, this property features a massive double detached garage (23'5 x 27'6) – a dream workspace for any handyman or hobbyist. The layout is functional, the bones are solid, and the possibilities are endless!

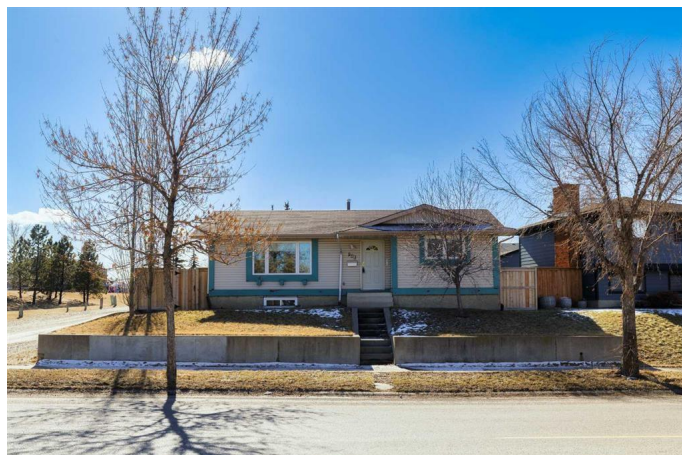
Located just steps from a park, schools, and with easy access to transit, 16 Ave, Stoney Trail, and shopping, this location offers unbeatable convenience for families or investors.

Don't miss out on this amazing opportunity – book your showing with your favourite realtor today and let your imagination bring this home to life!

Built in 1977

Essential Information

| | |
|----------------|-----------|
| MLS® # | A2200223 |
| Price | \$585,000 |
| Bedrooms | 5 |
| Bathrooms | 2.00 |
| Full Baths | 2 |
| Square Footage | 1,154 |
| Acres | 0.14 |



| | |
|------------|-------------|
| Year Built | 1977 |
| Type | Residential |
| Sub-Type | Detached |
| Style | Bungalow |
| Status | Active |

Community Information

| | |
|-------------|-------------------------|
| Address | 903 Abbotsford Drive Ne |
| Subdivision | Abbeydale |
| City | Calgary |
| County | Calgary |
| Province | Alberta |
| Postal Code | T2A5Y3 |

Amenities

| | |
|----------------|---|
| Parking Spaces | 2 |
| Parking | Double Garage Attached, Oversized, Rear Drive |
| # of Garages | 2 |

Interior

| | |
|-------------------|--|
| Interior Features | Separate Entrance, Vinyl Windows |
| Appliances | Central Air Conditioner, Dishwasher, Electric Stove, Garage Control(s), Microwave Hood Fan, Window Coverings |
| Heating | Forced Air, Natural Gas |
| Cooling | Central Air |
| Has Basement | Yes |
| Basement | Finished, Full |

Exterior

| | |
|-------------------|--|
| Exterior Features | Private Yard |
| Lot Description | Back Lane, City Lot, Corner Lot, Front Yard, See Remarks |
| Roof | Asphalt Shingle |
| Construction | Vinyl Siding, Wood Frame |
| Foundation | Poured Concrete |

Additional Information

| | |
|----------------|-----------------|
| Date Listed | March 7th, 2025 |
| Days on Market | 29 |
| Zoning | R-CG |

Listing Details

Listing Office Royal LePage Benchmark

Data is supplied by Pillar 9â,,ç MLSÂ® System. Pillar 9â,,ç is the owner of the copyright in its MLSÂ® System. Data is deemed reliable but is not guaranteed accurate by Pillar 9â,,ç. The trademarks MLSÂ®, Multiple Listing ServiceÂ® and the associated logos are owned by The Canadian Real Estate Association (CREA) and identify the quality of services provided by real estate professionals who are members of CREA. Used under license.